

Richard Rori,
Social
Protection
Policy Analyst

Integrating disability sensitive measures into social protection policies:-

How does Kenya measure up?



3-4 May, 2017
Protea Parktonian All Suite Hotel
Braamfontein, Johannesburg

2017 Annual
International SASPEN Conference

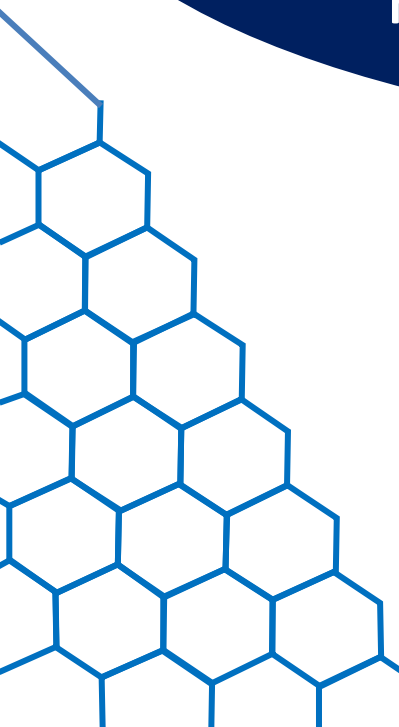
**INCLUSION, INTEGRATION
AND TRANSFORMATION:**
Social Protection for Persons with
Disabilities in the SADC

3-4 May, 2017
Protea Parktonian Braamfontein
Johannesburg, South Africa





Disability specific social protection legislations and policies are not sufficient on their own but must be accompanied by proactive enabling measures.



The Twin-Track Approach

**INCLUSION, INTEGRATION
AND TRANSFORMATION:**
Social Protection for Persons with
Disabilities in the SADC

Inclusion and participation of persons
with disabilities in the formulation and
implementation of SP policies

POLICIES

Formulation
and
development
of disability
inclusive SP
policies

SP PROGRAMS

Provision and
facilitation of
disability
sensitive SP
programs and
activities



Effective formulation and implementation of disability
SP policies requires actions towards setting up
disability inclusive SP programs and activities.



**FRIEDRICH
EBERT
STIFTUNG**

SASPEN
Southern African
Social Protection
Experts Network

Context

**INCLUSION, INTEGRATION
AND TRANSFORMATION:**
Social Protection for Persons with
Disabilities in the SADC

What are

SP disability legislation and
policies in Kenya?

Implementation
strategies?

Main challenges and experiences
in implementation?

Coherence and
integration approach?

How does the SP laws and
policies Measure up?'



**FRIEDRICH
EBERT
STIFTUNG**



Setting the Scene

**INCLUSION, INTEGRATION
AND TRANSFORMATION:**
Social Protection for Persons with
Disabilities in the SADC

- ❖ Kenya's population is approximately 48 million.
- ❖ 3.5% of Kenya's population is disabled .
- ❖ 66% of the disabled population lives in rural areas
- ❖ 47% of Kenyans live below the poverty line.
- ❖ At least 20% of the people living below the poverty line suffer from disability as well.
- ❖ 68% of the disabled population lives in poverty.
- ❖ Nearly 33 per cent of households with a disabled family member live below the poverty line compared to households without disabled people.
- ❖ Average household size for households headed by PWDs is 4.9 in rural areas compared to 3.4 in urban.

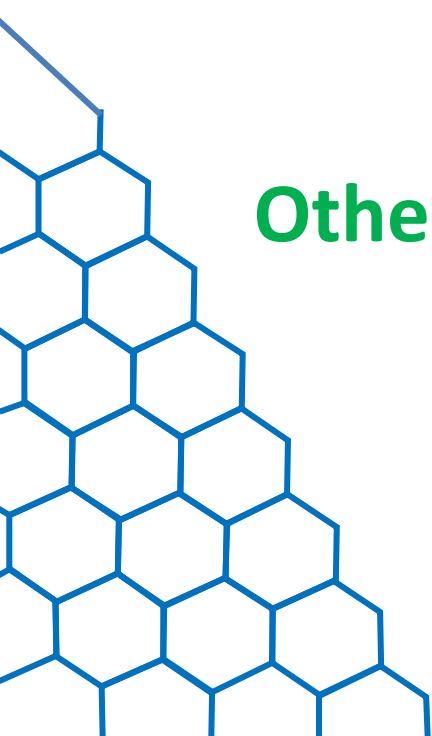
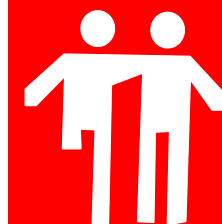
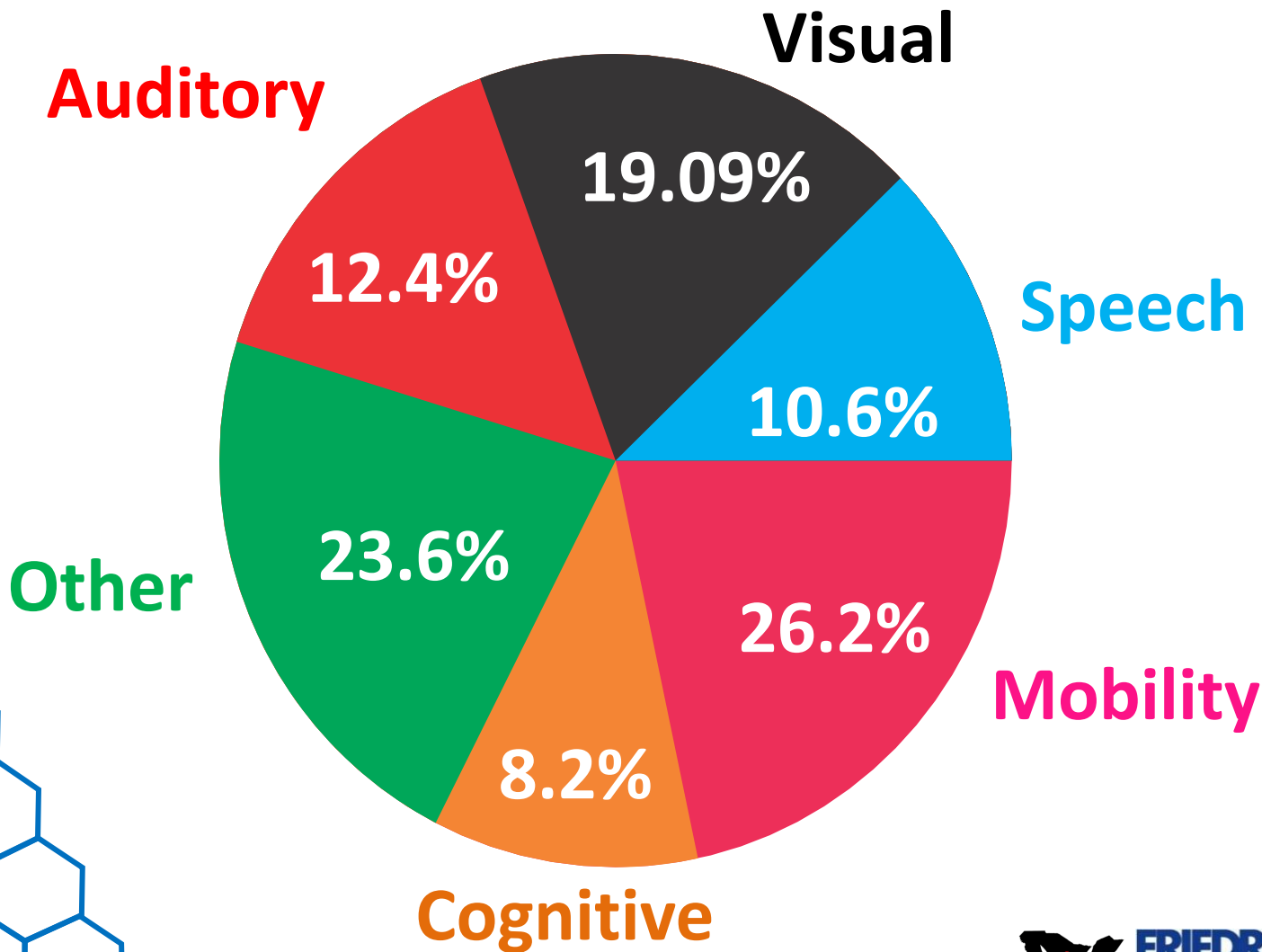


**FRIEDRICH
EBERT
STIFTUNG**

SASPEN
Southern African
Social Protection
Experts Network

Disability prevalence by Type

INCLUSION, INTEGRATION AND TRANSFORMATION:
Social Protection for Persons with Disabilities in the SADC

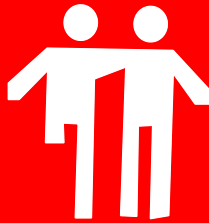


**FRIEDRICH
EBERT
STIFTUNG**



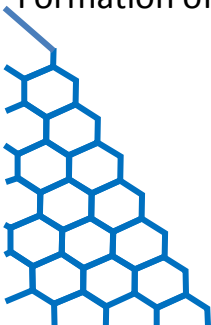
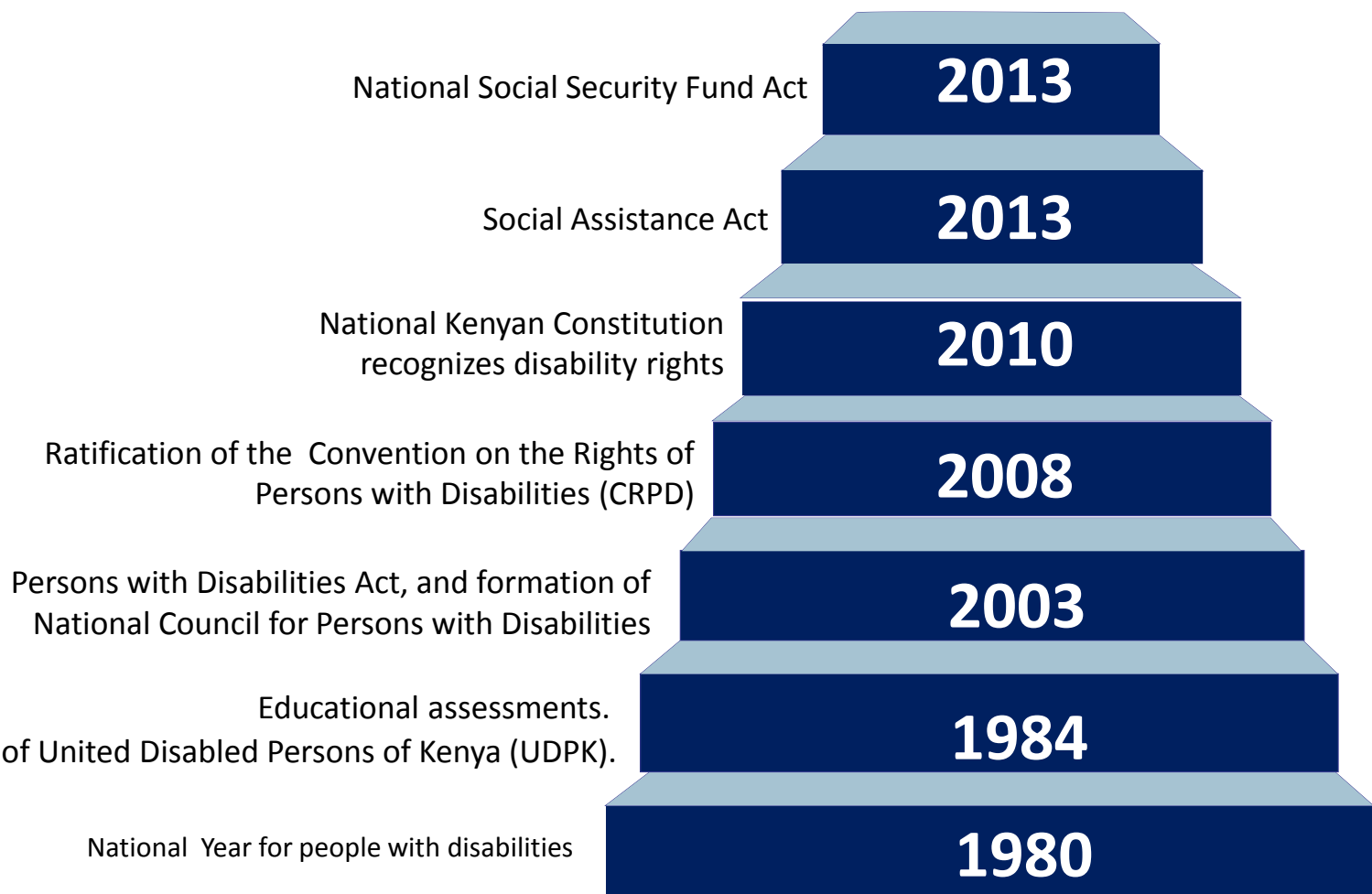
Significant Organizations of persons with disabilities

- United Disabled Persons of Kenya (UDPK)
- Kenya Society for the Blind
- Kenya Programmes of Disabled Persons
- Kenya Institute of the Blind
- Kenya Union of the Blind
- African Union of the Blind
- Kenya National Association of the Deaf
- Kenya Association of the Intellectually Handicapped
- Autism Society of Kenya
- Kenya Society of the Mentally Handicapped



Legislation and Policies for persons with disability – the journey

INCLUSION, INTEGRATION AND TRANSFORMATION:
Social Protection for Persons with Disabilities in the SADC



Legislation and policies for persons with Disabilities

**INCLUSION, INTEGRATION
AND TRANSFORMATION:**
Social Protection for Persons with
Disabilities in the SADC

Legislation

- The Persons with Disabilities Act, 2003
- National Social Security Fund Act, 1965, 1997, 2013
- Employment Act 2007
- Work Injury Benefits Act 2007
- Constitution of Kenya, 2010
- National Gender and Equality Act, 2011
- Social Assistance Act, 2013

Policies

- The Draft National Disability Policy
- Vision 2030
- National Special Needs Education Policy



**FRIEDRICH
EBERT
STIFTUNG**

SASPEN
Southern African
Social Protection
Experts Network

Objects of the legislation and policies

INCLUSION, INTEGRATION AND TRANSFORMATION:
Social Protection for Persons with Disabilities in the SADC



To affirm the basic human rights of persons with disabilities to equal access to social and economic opportunities; and



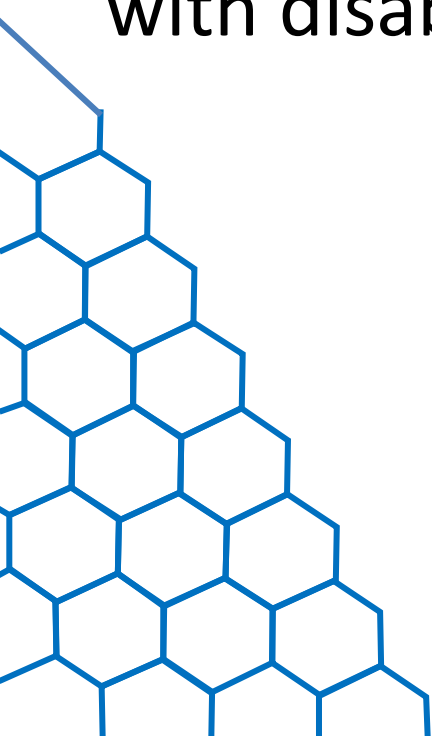
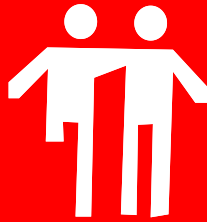
To create environments in which people with disabilities can maximise their capacity for making social and economic contributions



**FRIEDRICH
EBERT
STIFTUNG**



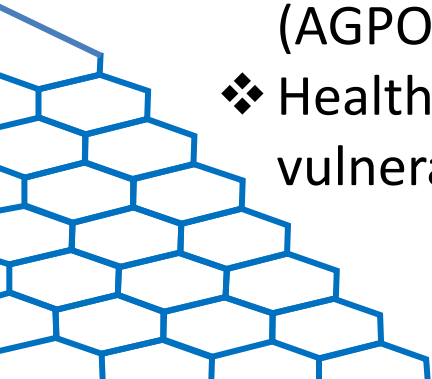
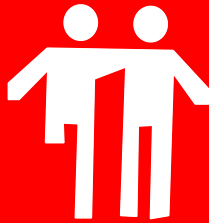
Although Kenya has a range of laws, policies, plans, and programmes to guarantee the social protection rights and address the needs of adults and children with disabilities, implementation is limited.



Government Support for persons with disabilities

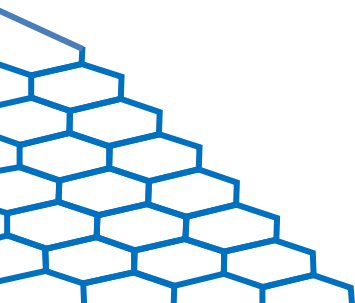
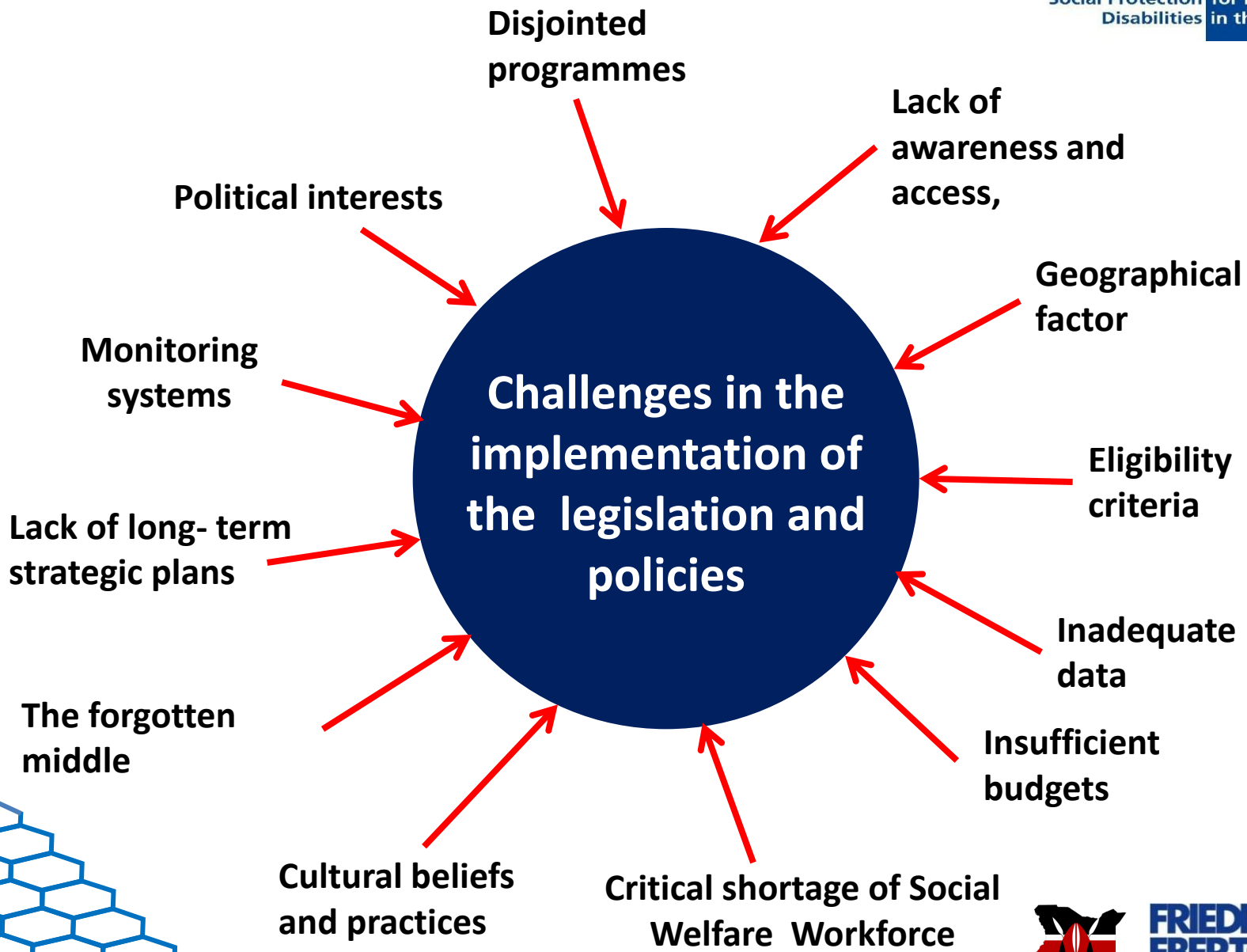
**INCLUSION, INTEGRATION
AND TRANSFORMATION:**
Social Protection for Persons with
Disabilities in the SADC

- ❖ Persons with Severe Disabilities Cash Transfer (PWSD-CT).
- ❖ Tax exemption on assistive devices including modified cars
- ❖ Free Primary and Secondary Education,
- ❖ Older Persons Cash Transfer Programme,
- ❖ Youth Empowerment Development Fund,
- ❖ Women Enterprise Fund,
- ❖ Cash Transfer to Orphaned and Vulnerable children
- ❖ National Development Fund (NDF) for PWDs)
- ❖ National Fund for the Disabled of Kenya (NFDK).
- ❖ Access to Government Procurement Opportunities (AGPO),
- ❖ Health Insurance Subsidy Program (HISP) for the vulnerable segments



**FRIEDRICH
EBERT
STIFTUNG**

SASPEN
Southern African
Social Protection
Experts Network



Establishing coherent systems

Designing and delivering
appropriate social protection
programmes, at scale

Implementing institutions need to
be strengthened to deliver social
protection predictably

Making Decentralisation happen

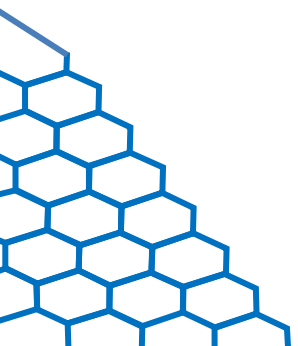
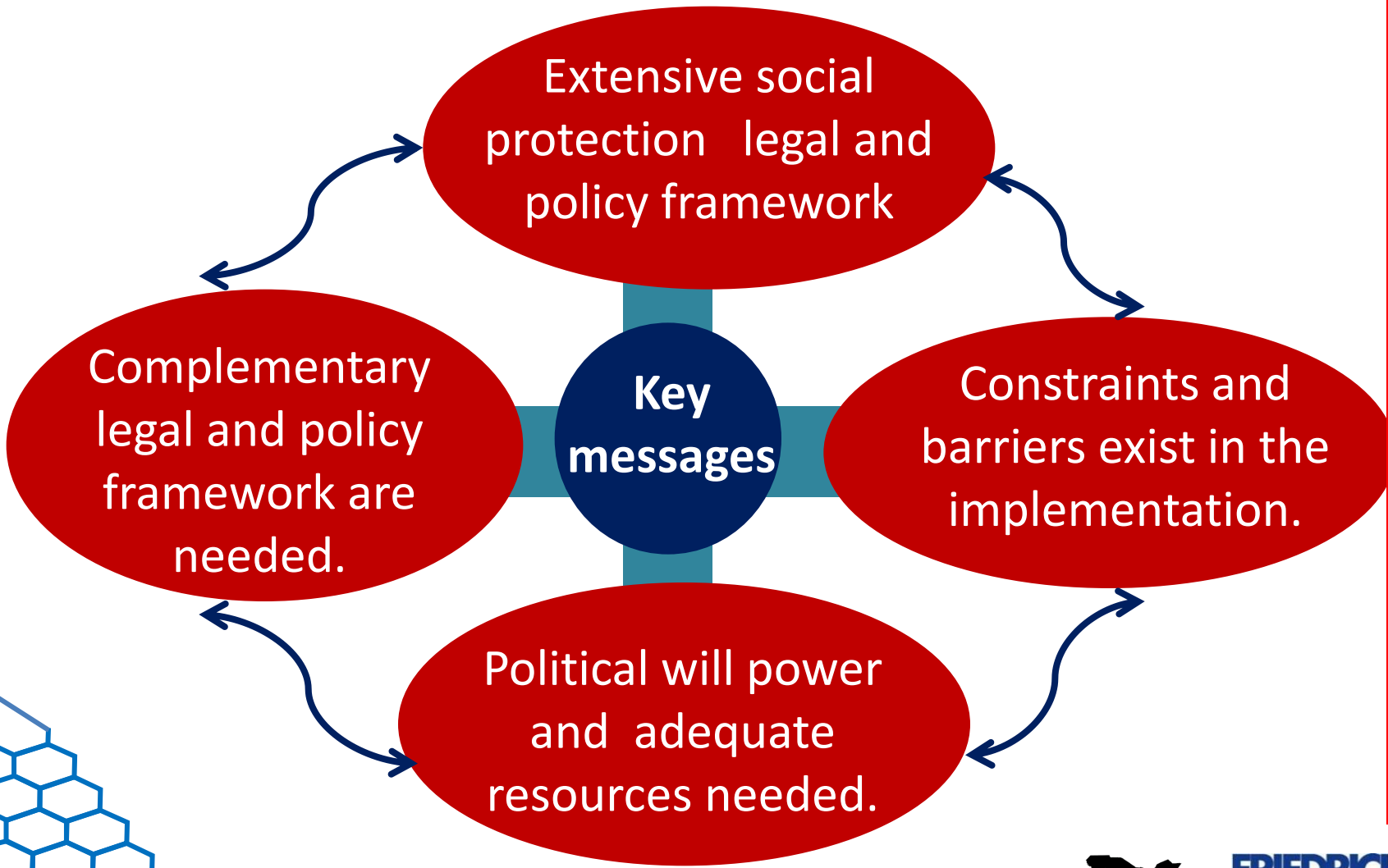
Enhance rights awareness

Increase participation of PWDs in
policy formulation and
implementation

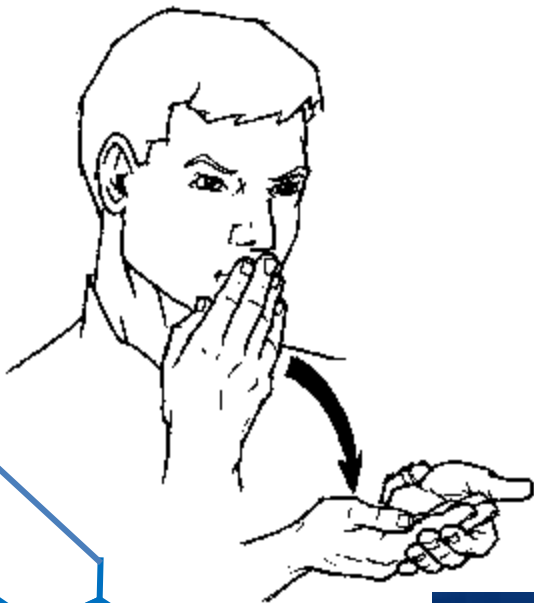
Mobilize more public financing for
PWDs

Recommendations

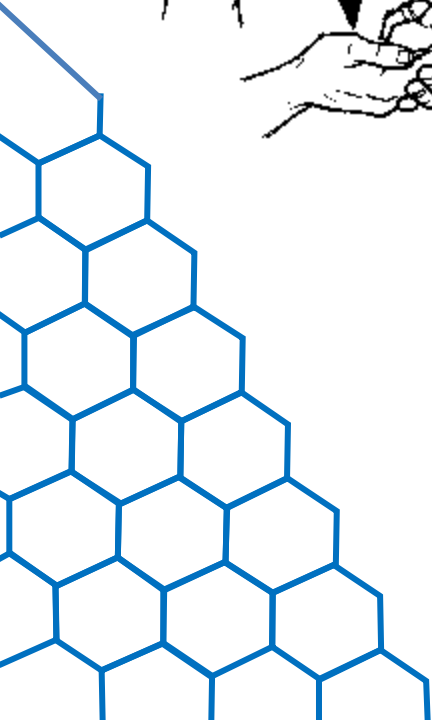
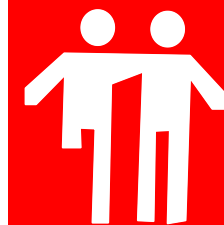




**INCLUSION, INTEGRATION
AND TRANSFORMATION:**
Social Protection for Persons with
Disabilities in the SADC



richardrori@yahoo.co.uk



- Richard Rori
- Email: richardrori@yahoo.co.uk