

Christina Mdemu & Vailet Mollel

Protection of children with disabilities in Tanzania

3-4 May, 2017
Protea Parktonian All Suite Hotel
Braamfontein, Johannesburg

2017 Annual
International SASPEN Conference

3-4 May, 2017
Protea Parktonian Braamfontein
Johannesburg, South Africa



**INCLUSION, INTEGRATION
AND TRANSFORMATION:**
Social Protection for Persons with
Disabilities in the SADC



The situation

Definition : Is a socially constructed phenomenon resulting from the interaction of a physical, mental, intellectual or sensory impairments with various barriers in a person's environment.

Tanzania 2012 census shows that there is a

Total of 2, 641, 802 (5.88%) of persons with disability as follows;

- Visual disability(848,530=1.93%),
- Physical disability(525,019=1.19%),
- Deafness (425,322=0.97%),
- Self care disability(401,931=0.91%),
- Mental disability(324,725=0.74%),
- Albinism16,477=0.04%),
- Other disabilities (99,798=0.23%)

The level of awareness on early identification of children with disability is very low in Tanzania for both the community and health service providers

Barriers to access social protection services;

- Myth that children with disability is a curse
- Belief that body parts of children with albinism will make someone rich
- Having sexual intercourse with children with disabilities can cure HIV/AIDS
- Inadequate infrastructure
- Economic situation to access social services
- Stigma and Discrimination

Tanzania has ratified various international and regional instruments on the rights and welfare of children with disabilities including ;

- UN Convention on the Rights of People with Disabilities, 2006
- United Nation Convention on the Rights of the Child, 1989,
- African Charter on the Rights and Welfare of Children, 1990
- The Law of the Child Act, 2009
- National Policy on Disability, 2004
- Persons with Disabilities Act, 2010

- S. 94 LCA 2009 and S. 20 Disability Act 2010 provides for the duty of the LGAs to protect children with disabilities and maintain registers for children with disabilities in their localities to inform service provision
- National Policy on Disability, 2004 provides for early identification of children with disability to reduce the impact of disabilities on its early stages. This also aims to reduce stigma

The GoT in collaboration with stake holders (CHSSP) have developed the guideline on Early Identification and Intervention of Children with Disabilities, 2016 with focus on;

- Prevention of impact of disability on early stages
- Response to reduce /control the impact of disability
- The guideline provides procedure to be used by community members and services provider to early identify disabilities in children and hence propose proper intervention to reduce and control the impact of disability in its early stage.

Response continues... NICMS

The government in collaboration with CHSSP has developed the National Integrated Case Management System(NICMS) aiming to provide integrated services in the community for children (MVC) focusing on

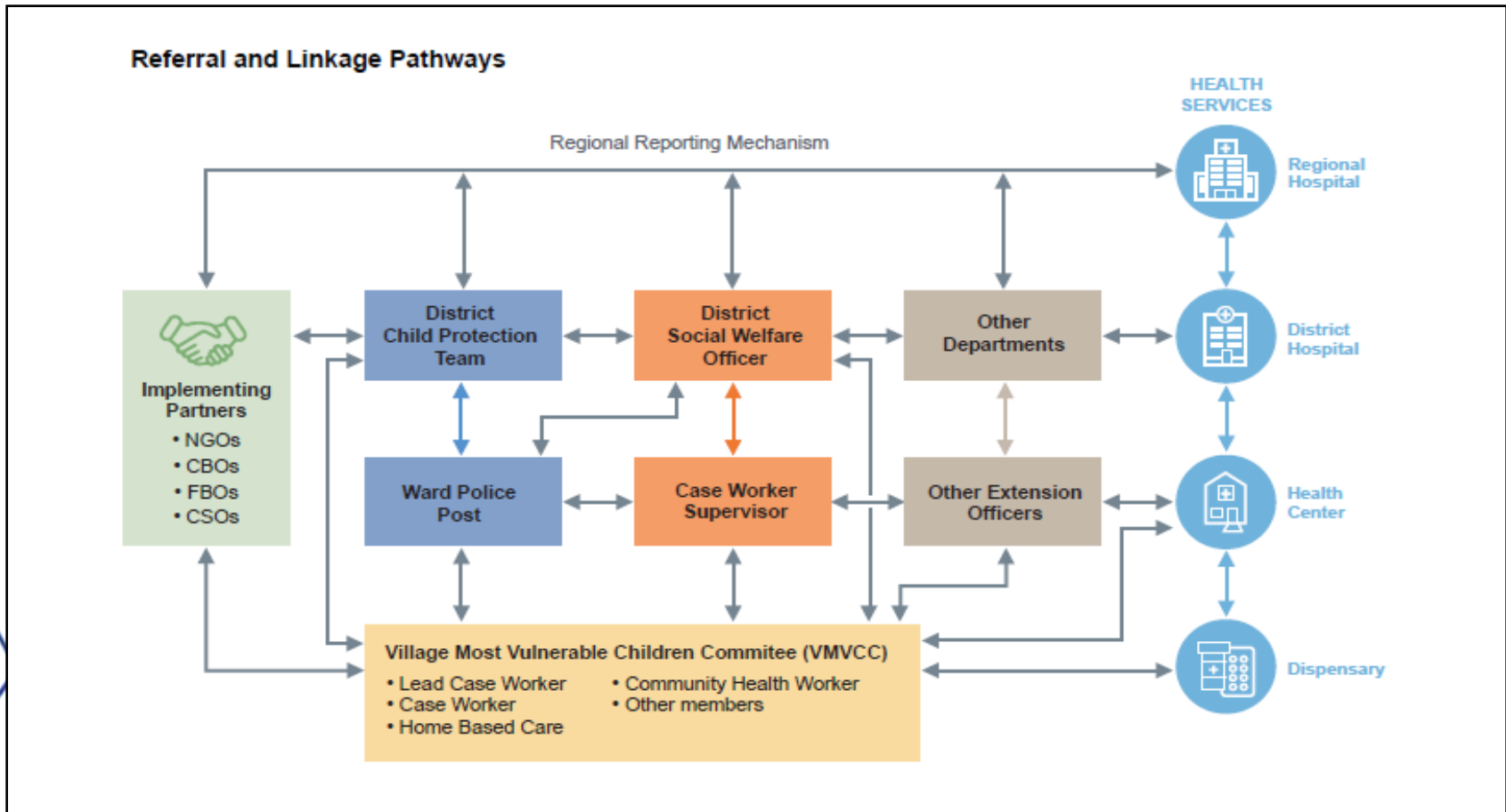
- Health particularly HIV
- Protection,
- Welfare services to ensure social protection for children with disability

This system strengthens community structures and workforce to ensure availability of integrated services to vulnerable groups including Children with disabilities through case management approach.

This system has a model that strengthen Bi directional referral and linkages services in the community through community structures and system to ensure children with disability are identified and accessing all services needed for their wellbeing.

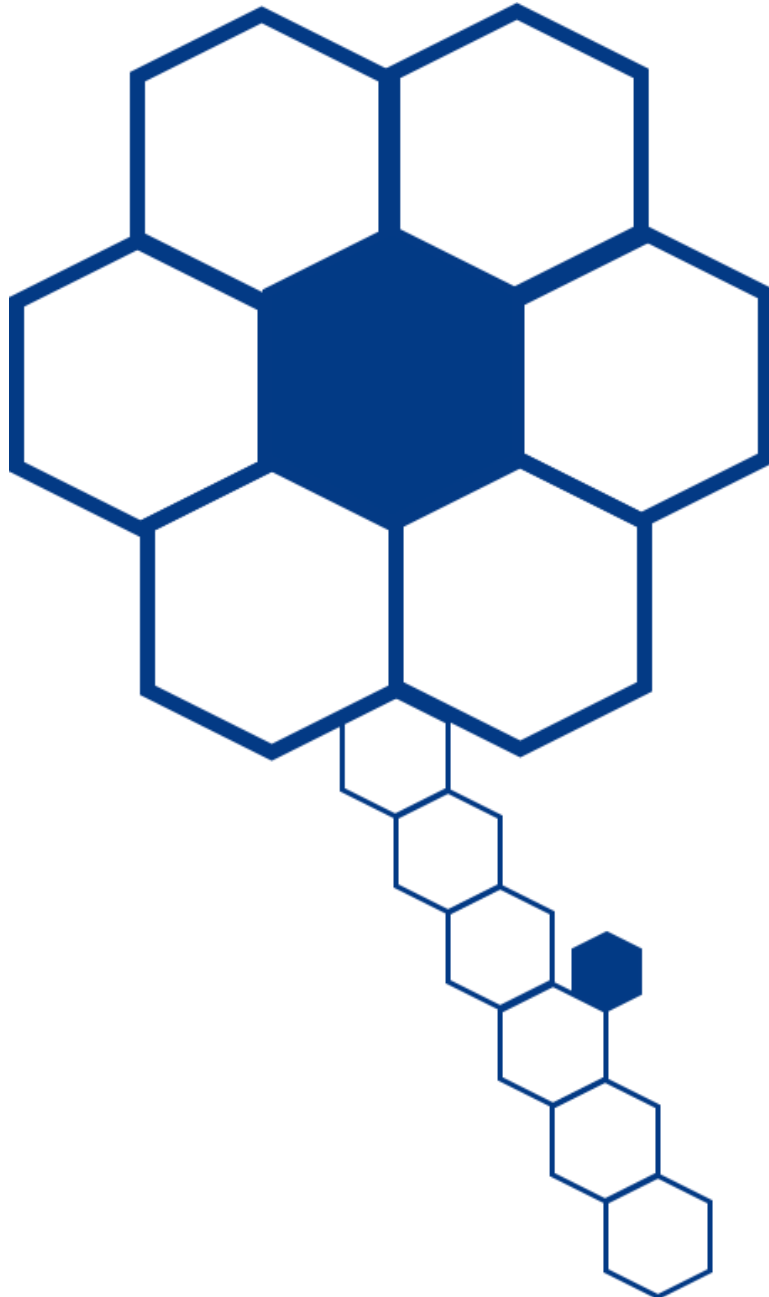
These services are both facility and community based.

Referral & linkage pathways



- ◆ Inclusive and special education
- ◆ Health and Rehabilitation services
- ◆ Provision of Assistive devices
- ◆ Cash Transfer to Households with Children with disabilities

- ◆ Political Will :The government established a department responsible for People With disabilities
- ◆ Buy inn of the National Integrated Case management System by the government and Stakeholders
- ◆ Available government rehabilitation centers
- ◆ Available forums like National advisory Council for PWD
- ◆ Association for people with disabilities



**INCLUSION, INTEGRATION
AND TRANSFORMATION:**
Social Protection for Persons with
Disabilities in the SADC

Christina Mdemu (Advocate)
2chrissmarctina@gmail.com

**Vailet Mollel(Social Welfare
Expert)**
vailet.mollel@yahoo.com